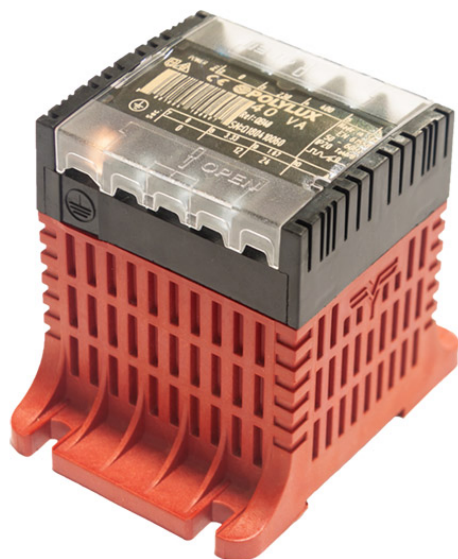


1. Single phase isolating transformers

P | Q | IP FAMILY > QD63



Features

Dry type cast resin transformer

Advantages of resin technology:

- Protection against corrosive environments
- Protection against high vibration levels
- Protection against electrodynamic efforts
- Reduction of noise level
- Increase of product's lifespan

IP-20 enclosure:

Last generation V-0 fireproof polymer box according to UL94 up to 2500 VA

Polyester resin from 1250 VA

Safety class I, convertible in class II up to 1000 VA

Includes LED functioning indicator

Full power capacity in every connection

Voltage selection through metallic bridges (included)

Possibility of tailor-made manufacturing

Technical Characteristics

Rating	63 VA
Input voltage	230/400 V
Output voltage	115/230 V
Frequency	50/60 Hz
Protection degree	IP-20
Cooling	ANAN
Ambient temperature	40°C
Temperature rise	Class B
Insulation	Class B - 130°C
Windings	Class HC - 220°C
Test voltage	4,6 kV (1 min, 50 Hz) pri-sec - 3,2 kV (1 min, 50 Hz) pri-earth - 2,5 kV (1 min, 50 Hz) sec-earth
Standards	IEC/EN/UNE-EN 61558, CE
Mounting	Screws and DIN Rail
Weight	1,5 kg
Dimensions	84x101x98x88x55 mm 5Ø

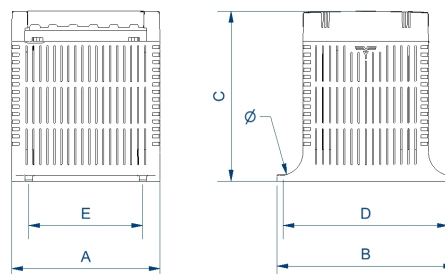
Applications

The transformers P, Q and N are especially designed to adapt voltages in applications of maneuver and control in both domestic and industrial as well as in electrical cabinets.

Another important application is the galvanic isolation of facilities for safety reasons, as well as the generation of neutrals referenced to earth.

Thanks to the resin, the Q Series transformers are the optimal solution for areas with a temperature elevated environment and humid areas with high degrees of corrosion and dust.

Areas with high levels of vibrations.



+ Info www.polylux.com

Productos equivalentes