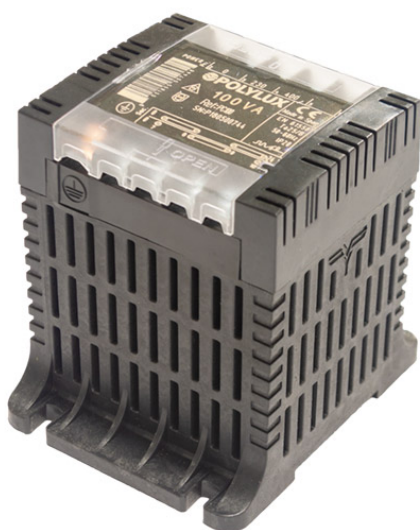


# 1. Single phase isolating transformers

P | Q | IP FAMILY > PD630



## Technical Characteristics

Rating	630 VA
Input voltage	230/400/460 V
Output voltage	115/230 V
Frequency	50/60 Hz
Protection degree	IP-20
Cooling	ANAN
Ambient temperature	30°C
Temperature rise	Class B
Insulation	Class B - 130°C
Windings	Class HC - 220°C
Test voltage	4,6 kV (1 min, 50 Hz) pri-sec - 3,2 kV (1 min, 50 Hz) pri-earth - 2,5 kV (1 min, 50 Hz) sec-earth
Standards	IEC/EN/UNE-EN 61558, CE
Mounting	Screws
Weight	7,8 kg
Dimensions	136x162x156x145x104 mm 6Ø

## Features

Dry type transformer

IP-20 enclosure:

Last generation V-0 fireproof polymer box according to UL94 up to 2500 VA.

Metallic box painted with epoxi polyester from 3150 VA.

Safety Class I, convertible to Class II up to 2500 VA.

Includes LED functioning indicator.

Full rating at all outputs.

Voltage selection through metallic bridges (included).

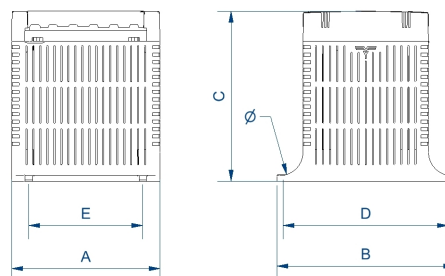
Optional protection fuse.

Possibility of custom-made manufacturing.

## Applications

The P, Q and N transformers are specially designed to isolate and adapt voltages in control and operation applications in both domestic and industrial environments as well as in switchboards / panels.

Another important application is the galvanic insulation of installations for safety reasons, as well as the generation of earth-referenced neutrals.



+ Info [www.polylux.com](http://www.polylux.com)

Productos equivalentes