

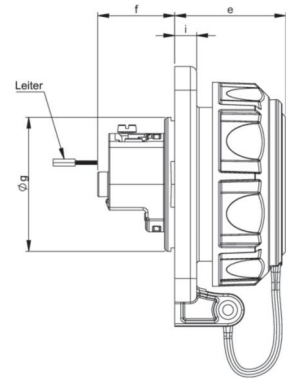
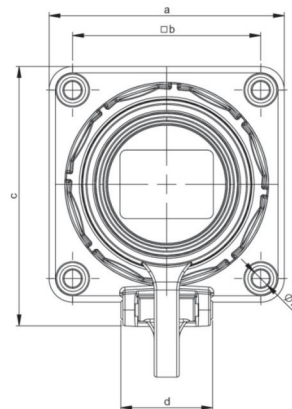
article#	<b>20351-8b</b>
article description	<b>Flanged socket 75x75 nat with cover band IP66/68 (blue)</b>
description long	Socket outlet with protective earth contact series NAUTILUS housing material: PA6 color: blue flange size: 75x75 mm with 4-point fastening connection technology: screw terminal, rear entry system: Austrian/German earthing system contacts: nickel plated 250V~ / 16A / 2P+E protection rating: IP66/68 watertight (2bar/2h)
GTIN (EAN)	9003399023965
country of origin	AT
customs number	85366990
net weight	0.103 kg
packaging quantity	10
minimum order quantity	10

ETIM 9.0	EC001325
Model	Socket outlet CEE 7/3 (type F)
Material	Plastic
Material quality	Thermoplastic
Flange size	75x75 mm
With hinged lid	True
For heavy conditions according to VDE	True
Degree of protection (IP)	IP68
Insert direction	Straight
Connection system	Screwed terminal
Colour	Blue
Number of poles	3
Nominal current	16 A
Nominal voltage	250 V

a	75 mm
b	60 mm
c	84 mm
d	30 mm
e	36 mm
f	25 mm
g	43 mm
h	5,5 mm
i	7 mm
wire flexible	1,5-2x2,5 mm <sup>2</sup>
wire solid	1,5-2x2,5 mm <sup>2</sup>
contact screws	80 Ncm
stripping length	7 mm
ambient temperature	-25 – 40 °C
IK-code *)	IK10



\*) The IK-test is not part of the IEC 60309 standard for industrial plugs and socket-outlets or the IEC 60884 standard for household plugs and socket-outlets. PC Electric GmbH has therefore tested the IK-codes of these products in accordance with IEC 62262 and according to the test method of IEC 60068-2-75 Ehc, with conditioning for 48 hours at 40°C and a relative humidity of 95%.



<https://www.pcelectric.at/shop/en/?func=detail&artnr=20351-8b>