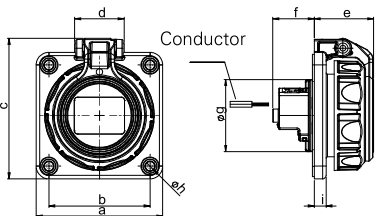


watertight flanged sockets IP66/68

Flanged socket 75x75mm with hinged lid IP66/68



	16 Amp
Poles	2P + E
a [mm]	75
b [mm]	60
c [mm]	84
d [mm]	30
e [mm]	36
f [mm]	25
g [mm]	43
h [mm]	5,5
i [mm]	7
Wire flexible [mm ²]	1- 2x2,5
Wire solid [mm ²]	1- 2x2,5
Contact screws [Ncm]	80
Weight [g]	105

- with screw terminals
- housing material: PC/ABS
- contacts: nickel-plated contacts
- rear connection
- 4-point fastening

IP66/68 watertight
up to 2 bar / 2h



Wall housing for flanged socket 75x75mm IP66/68

Example:



- for flange size 75x75mm
- material: PA6
- 4-point fixation
- incl. mounting screws
- incl. cable gland M25



Surface housing for flanged socket 75x75mm IP66/68

Example:



- for flange size 75x75mm
- material: PA6
- 2-point fixation separated from connection area
- incl. mounting screws
- incl. cable gland M20

Opening and closing:

When opening the hinged lid it latches into a defined position which prevents the lid when closing in a half position (Fig.1) on the housing. The open and closed position is visible by the position of the silver label to make sure, that the socket is closed all the way to be watertight.

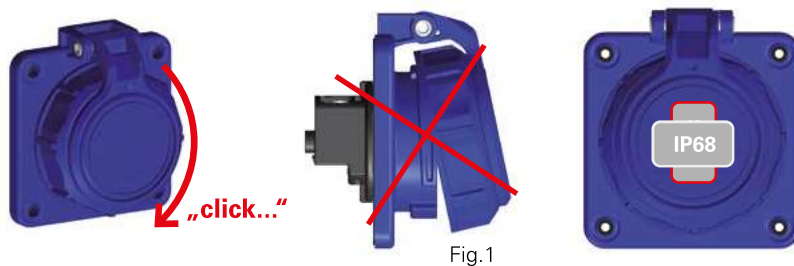



Fig.1


Labelling field horizontal

=> cover waterproof closed 

Labelling field vertical

=> cover not closed correctly (not seal) 

Amp.	Poles	pack. unit	Abbreviations/Types	250V~	250V~
				50/60Hz blue	50/60Hz bronze-green
				Cat.No.	Cat.No.

16	3	10	Austrian/German System		20352-8b	20352-8u
					20352-8bc	20352-8uc
16	3	10	French/Belgian System		20342-8b	20342-8u
					20342-8bc	20342-8uc



20342-8b



20342-8u

		10	wall housing (empty)		20168g	20168.u
--	--	----	----------------------	--	--------	---------



20168g

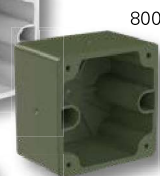


20168.u

		10	surface housing, no opening (blind)		80068	80068.u
		10	surface housing with 1x cable gland M20		80168	80168.u



80068



80068.u



80168



80168.u

■ Screw head seal:

Plastic bed „A“ acts as an additional screw head seal to prevent water entering through the screw head.

Flange gasket (seal) „B“ additionally prevents water entering through the threaded shaft of the screw.



A



B

