

SCHALTGERÄTE

Komplett-Typen Baureihe ML

Complete types Series ML

Hauptschalter/ Not-Aus-Schalter

Fronteinbau E

Main switches Emergency-off switches

Front mounting E

Fronteinbau mit 4-Lochbefestigung

Anschlusschrauben sind von hinten zugänglich

Griff/Frontschild
schwarz/silber sw/si oder
rot/gelb rt/ge (mit Not-Aus Funktion)

4-hole front mounting

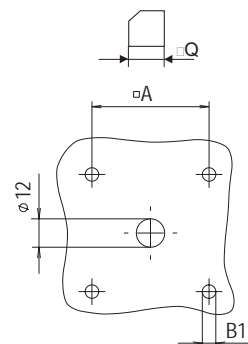
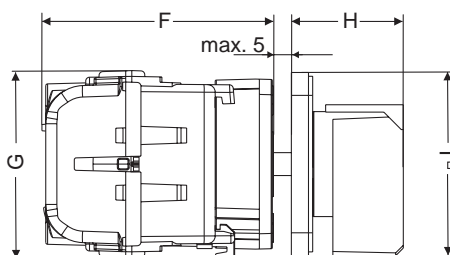
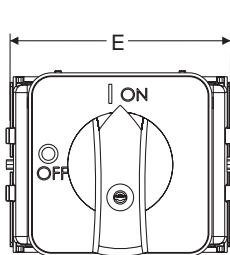
terminal screws are accessible
from the rear

handle/front plate
black/silver bk/si or
red/yellow rd/ge (with Emergency-off function)

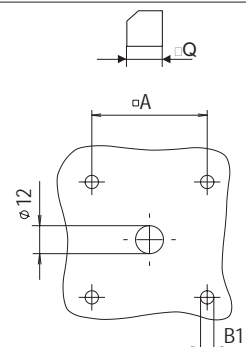
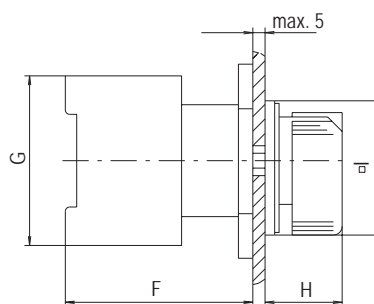
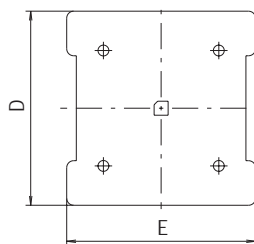


*ML0 IP 55
IP 65

Abmessungen / Dimensions
Bauform / Design: 0200 / 0200.02
Baureihe / Series: ML0



Abmessungen / Dimensions
Bauform / Design: 0200 / 0200.02 / 0400 / 0400.02 / 0600 / 0600.02
Baureihe / Series: ML1-ML3



Baureihe Series	Abmessungen (mm) Dimensions (mm)								
	A	B1	D	E	F	G	H	I	Q
ML0	36	4,2		60	60	49	29	48	6
ML1	36	4,2	44	44	50	55	29	48	6
ML2	48	5,5	58	58	72	75	33	64	6
ML3	68	5,5	78	78	72	80	35	88	6

Schaltprogramm Contact arrangement	Dauerstrom I _{th} Rated Uninterrupted current I _{th} A	Leistung Rating AC 3 kW	Leistung Rating AC 23A kW	Baureihe Series	Griff/ Frontschild handle/ front plate	Typ Type	Best.Nr. Part #
3-polig 3-pole	25	7,5	7,5	ML0	rt/ge rd/ye	ML0-016-3E-0200.02	MZ 57 311
	25	7,5	7,5	ML0	sw/si bk/si	ML0-016-3E-0200	MZ 57 310
	32	9	9	ML0	rt/ge rd/ye	ML0-032-3E-0200.02	MZ 59 311
	32	9	9	ML0	sw/si bk/si	ML0-032-3E-0200	MZ 59 310
	25	7,5	11	ML1	rt/ge rd/ye	ML1-025-E-0200.02	MZ 33 065
	25	7,5	11	ML1	sw/si bk/si	ML1-025-E-0200	MZ 33 057
	40	11	15	ML1	rt/ge rd/ye	ML1-040-E-0200.02	MZ 35 065
	40	11	15	ML1	sw/si bk/si	ML1-040-E-0200	MZ 35 057
	63	22	30	ML2	rt/ge rd/ye	ML2-063-E-0400.02	MZ 37 065
	63	22	30	ML2	sw/si bk/si	ML2-063-E-0400	MZ 37 057
	80	30	37	ML2	rt/ge rd/ye	ML2-080-E-0400.02	MZ 39 065
	80	30	37	ML2	sw/si bk/si	ML2-080-E-0400	MZ 39 057
	125	37	45	ML3	rt/ge rd/ye	ML3-125-E-0600.02	MZ 41 065
	125	37	45	ML3	sw/si bk/si	ML3-125-E-0600	MZ 41 057
3-polig + 1S + 1Ö 3-pole + 1NC + 1NO	25	7,5	7,5	ML0	rt/ge rd/ye	ML0-016-3E-0200.02-HI	MZ 57 373
	25	7,5	7,5	ML0	sw/si bk/si	ML0-016-3E-0200-HI	MZ 57 372
	32	9	9	ML0	rt/ge rd/ye	ML0-032-3E-0200.02-HI	MZ 59 373
	32	9	9	ML0	sw/si bk/si	ML0-032-3E-0200-HI	MZ 59 372
	25	7,5	11	ML1	rt/ge rd/ye	ML1-025-E-0200.02-HI	MZ 33 068
	25	7,5	11	ML1	sw/si bk/si	ML1-025-E-0200-HI	MZ 33 067
	40	11	15	ML1	rt/ge rd/ye	ML1-040-E-0200.02-HI	MZ 35 068
	40	11	15	ML1	sw/si bk/si	ML1-040-E-0200-HI	MZ 35 067
	63	22	30	ML2	rt/ge rd/ye	ML2-063-E-0400.02-HI	MZ 37 068
	63	22	30	ML2	sw/si bk/si	ML2-063-E-0400-HI	MZ 37 067
	80	30	37	ML2	rt/ge rd/ye	ML2-080-E-0400.02-HI	MZ 39 068
	80	30	37	ML2	sw/si bk/si	ML2-080-E-0400-HI	MZ 39 067
	125	37	45	ML3	rt/ge rd/ye	ML3-125-E-0600.02-HI	MZ 41 068
	125	37	45	ML3	sw/si bk/si	ML3-125-E-0600-HI	MZ 41 067
4-polig 4-pole	25	7,5	7,5	ML0	rt/ge rd/ye	ML0-016-4E-0200.02	MZ 57 611
	25	7,5	7,5	ML0	sw/si bk/si	ML0-016-4E-0200	MZ 57 610
	32	9	9	ML0	rt/ge rd/ye	ML0-032-4E-0200.02	MZ 59 611
	32	9	9	ML0	sw/si bk/si	ML0-032-4E-0200	MZ 59 610
	25	7,5	11	ML1	rt/ge rd/ye	ML1-025-E-0200.02-NV	MZ 33 066
	25	7,5	11	ML1	sw/si bk/si	ML1-025-E-0200-NV	MZ 33 061
	40	11	15	ML1	rt/ge rd/ye	ML1-040-E-0200.02-NV	MZ 35 066
	40	11	15	ML1	sw/si bk/si	ML1-040-E-0200-NV	MZ 35 061
	63	22	30	ML2	rt/ge rd/ye	ML2-063-E-0400.02-NV	MZ 37 066
	63	22	30	ML2	sw/si bk/si	ML2-063-E-0400-NV	MZ 37 061
	80	30	37	ML2	rt/ge rd/ye	ML2-080-E-0400.02-NV	MZ 39 066
	80	30	37	ML2	sw/si bk/si	ML2-080-E-0400-NV	MZ 39 061
	125	37	45	ML3	rt/ge rd/ye	ML3-125-E-0600.02-NV	MZ 41 066
	125	37	45	ML3	sw/si bk/si	ML3-125-E-0600-NV	MZ 41 061
4-polig+ 1S + 1Ö 4-pole + 1NC + 1NO	25	7,5	7,5	ML0	rt/ge rd/ye	ML0-016-4E-0200.02-HI	MZ 57 673
	25	7,5	7,5	ML0	sw/si bk/si	ML0-016-4E-0200-HI	MZ 57 672
	32	9	9	ML0	rt/ge rd/ye	ML0-032-4E-0200.02-HI	MZ 59 673
	32	9	9	ML0	sw/si bk/si	ML0-032-4E-0200-HI	MZ 59 672
	25	7,5	11	ML1	rt/ge rd/ye	ML1-025-E-0200.02-NV-HI	MZ 33 080
	25	7,5	11	ML1	sw/si bk/si	ML1-025-E-0200-NV-HI	MZ 33 086
	40	11	15	ML1	rt/ge rd/ye	ML1-040-E-0200.02-NV-HI	MZ 35 080
	40	11	15	ML1	sw/si bk/si	ML1-040-E-0200-NV-HI	MZ 35 086
	63	22	30	ML2	rt/ge rd/ye	ML2-063-E-0400.02-NV-HI	MZ 37 080
	63	22	30	ML2	sw/si bk/si	ML2-063-E-0400-NV-HI	MZ 37 086
	80	30	37	ML2	rt/ge rd/ye	ML2-080-E-0400.02-NV-HI	MZ 39 080
	80	30	37	ML2	sw/si bk/si	ML2-080-E-0400-NV-HI	MZ 39 086
	125	37	45	ML3	rt/ge rd/ye	ML3-125-E-0600.02-NV-HI	MZ 41 080
	125	37	45	ML3	sw/si bk/si	ML3-125-E-0600-NV-HI	MZ 41 086

